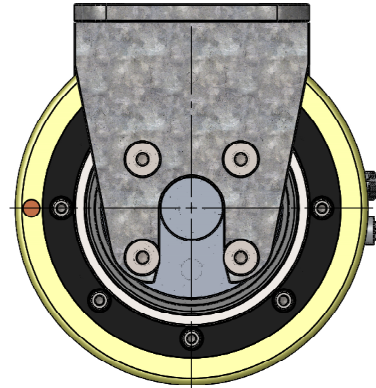
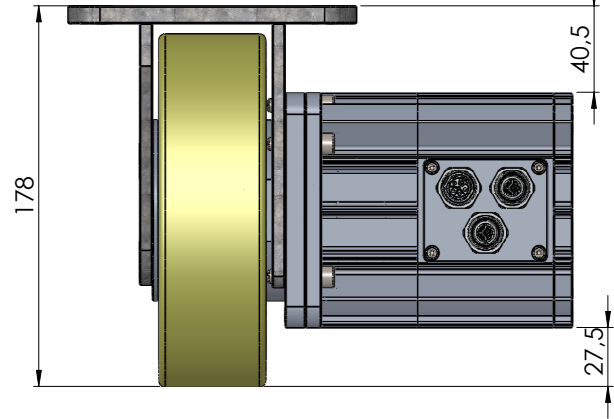
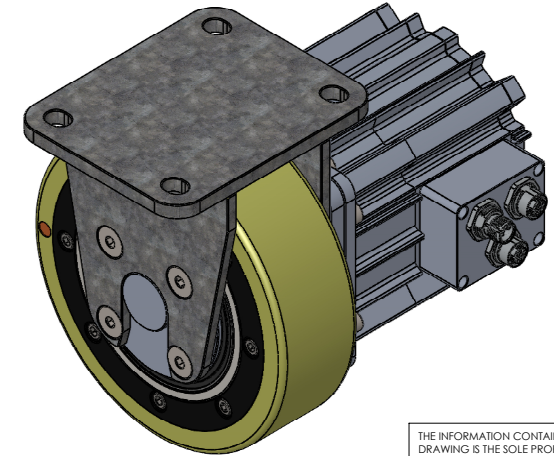
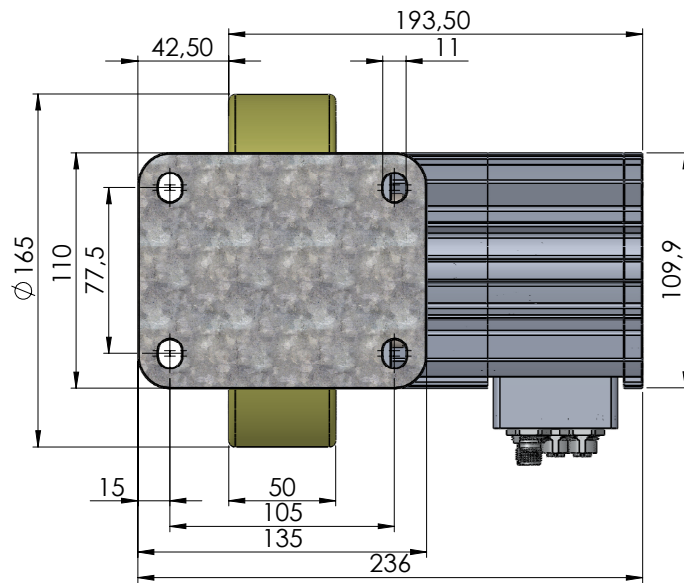


calculation of speed, torque and force directly on the wheel

calculation of speed, torque and force directly on the wheel							
input field							
output field							
motor speed	motor torque	gear reduction	wheel Ø		speed AGV	speed AGV	torque AGV without efficiency loss
rpm	Nm	i	mm		km/h	m/s	Nm
5510	2,25	22,5	165		7,62	2,12	50,63
							torque AGV at the wheel tire without efficiency loss
							N wheel
							613,64



motor data wheel drive	
property	value
No. OF POLES	14
DC LINK VOLTAGE	48 VDC
RATED POWER	1300 W
RATED TORQUE	2,25 NM
RATED SPEED	5510 RPM
RATED CURRENT	approximately 22 A
MAXIMUM TORQUE	- NM
INSULATION CLASS	F
WEIGHT	0,748 KG
FEEDBACK DEVICE	Circulo 9
PROTECTION LEVEL	TBD
BRAKE	BFK551-04



THE INFORMATION CONTAINED IN THIS DRAWING IS THE SOLE PROPERTY OF Laudensch Formtechnik GmbH & Co KG. ANY REPRODUCTION IN PART OR AS A WHOLE WITHOUT THE WRITTEN PERMISSION OF Laudensch Formtechnik GmbH & Co KG IS PROHIBITED.

filename				weight: 10451.84 g			
12100_22_02_000A_Antrieb 1300W_22.5_Datenblatt_Englisch							
index	day	name	date/name	day	name	status:	
				02.02.23	LL		
			signed				
			checked				
			scala	designation:			
			1:2.5	drive 1300W 22.5:1			
			format:	drawing number:			
			A3	12100_22_02_000A			
				index			

Laudensch
Formtechnik
D78559 Gosheim
Am Sturmbühl 6

[Gear Mountain](#)

Laudensch
Formtechnik