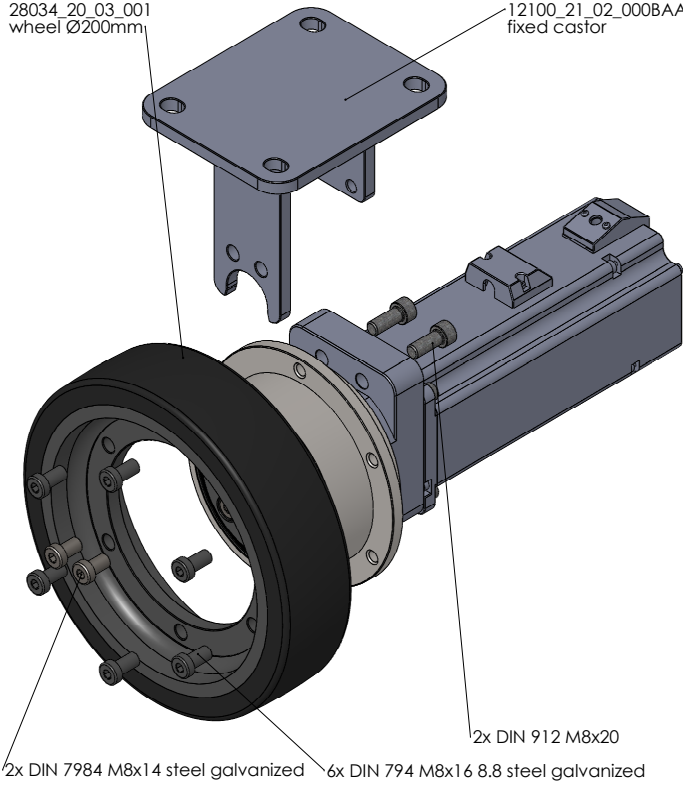
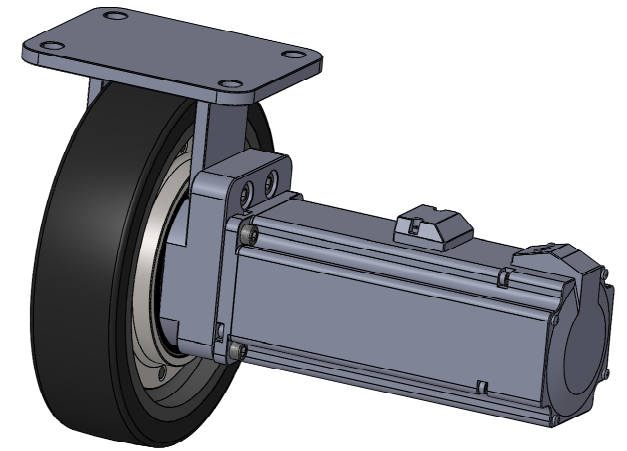
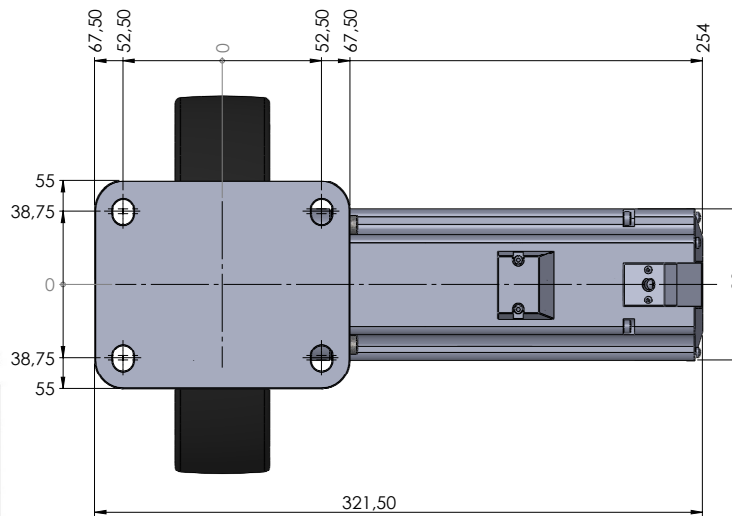
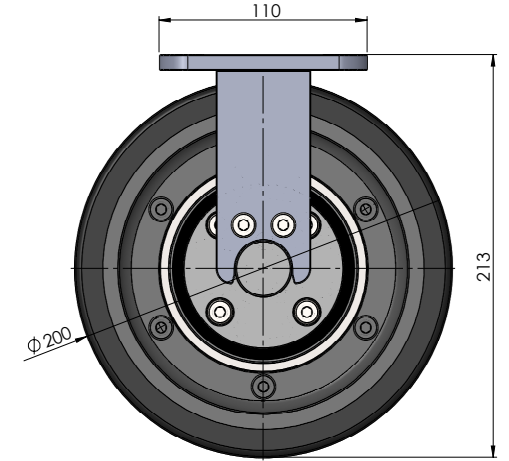
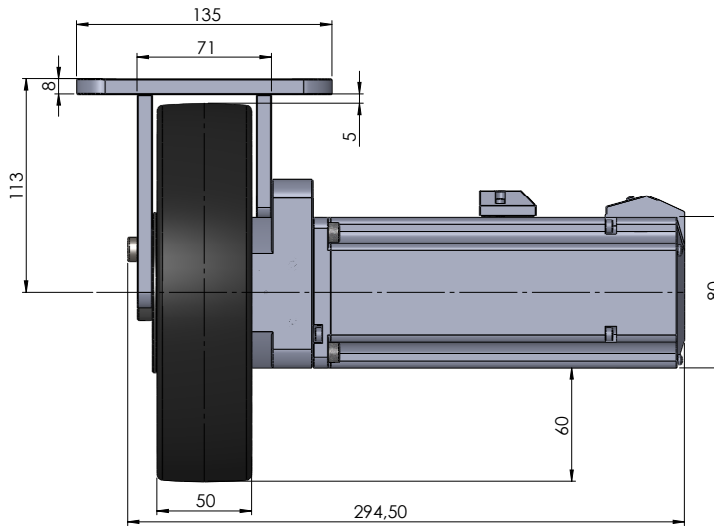


28034_20_03_001
wheel Ø200mm

12100_21_02_000BAA
fixed castor



2x DIN 912 M8x20
2x DIN 7984 M8x14 steel galvanized
6x DIN 794 M8x16 8.8 steel galvanized



SPECIFICATIONS Unit: mm

No. of pole	8
No. of phase	3
Resistance/Line	TBD±10% @20°C
Inductance/Line	TBD±20% mH @1kHz
Rated voltage	48 VDC
No load speed	5400±10% rpm
No load current	2 A
Rated torque	2 Nm
Rated speed	4300 rpm
Rated current	27 A
Peak torque	9 Nm
Peak current	81 A
Back EMF	6.28 Vrms/Krpm
Torque constant	0.085 Nm/A
Insulation class	B 130°C
Dielectric strength	600VAC 1SEC

Temp.Sensor Wire
KTY84-150

COLOR	RED	WHT
DEFINE	TEMP	TEMP
AWG20		

Brake Wire

COLOR	RED	BLK
DEFINE	+24V/GND	
AWG22		

Insulation resistance	100Mohm @500VDC
Rotor inertia	1,6 Kg·cm ²
Weight	4 kg
Operation ambient	-20°C ~ 50°C
Storage ambient	-20°C ~ 85°C
Phase U:	YEL
Phase V:	RED
Phase W:	BLK
Wires for phase	
Feedback device	4096p/rev incremental magnetic encoder

Feedback Wire:

COLOR	Define
BLU	A+
BLU/BLK	A-
BLK	B+
WHT/BLK	B-
PUR	I+
GRY	I-
BRN	HU
ORG	Hv
YEL	Hw
RED	+5V
RED/WHT	GND

calculation of speed, torque and force directly on the wheel

input field							
output field							
motor speed	motor torque	gear reduction	wheel Ø	speed AGV	speed AGV	torque AGV without efficiency loss	torque AGV at the wheel tire without efficiency loss
rpm	Nm	i	mm	km/h	m/s	Nm	N wheel
4300	2	22,5	200	7,20	2,00	45,00	450,00

OEM		
Tragfähigkeit		
Geschwindigkeit	Antriebs-, Lenk- u. Bremsräder	freirollende Lasträder
6 km/h	900 kg	kg
10 km/h	740 kg	kg
16 km/h	630 kg	kg

filename:	12100_21_02_000_Radantrieb_Bock_22.5_Datenblatt_Englisch	weight:	11708.77gr			
index	day	name	date/checked	day	name	status:
				02.02.23	LL	
				signed		
				checked		
				scale:	designation:	
				1:2	wheel drive i=22,5:1	
				format:	wheel 200, motor 900W with brake	
				A2	drawing number:	
					12100_21_02_000D	

THE INFORMATION CONTAINED IN THIS DRAWING IS THE SOLE PROPERTY OF Laudensch Formtechnik GmbH & Co KG. ANY REPRODUCTION IN PART OR AS A WHOLE WITHOUT THE WRITTEN PERMISSION OF Laudensch Formtechnik GmbH & Co KG IS PROHIBITED.



index